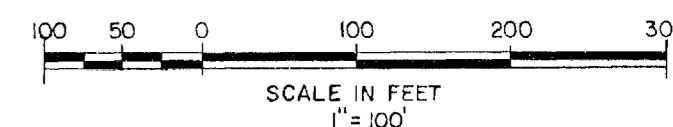
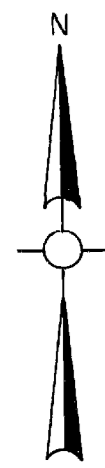


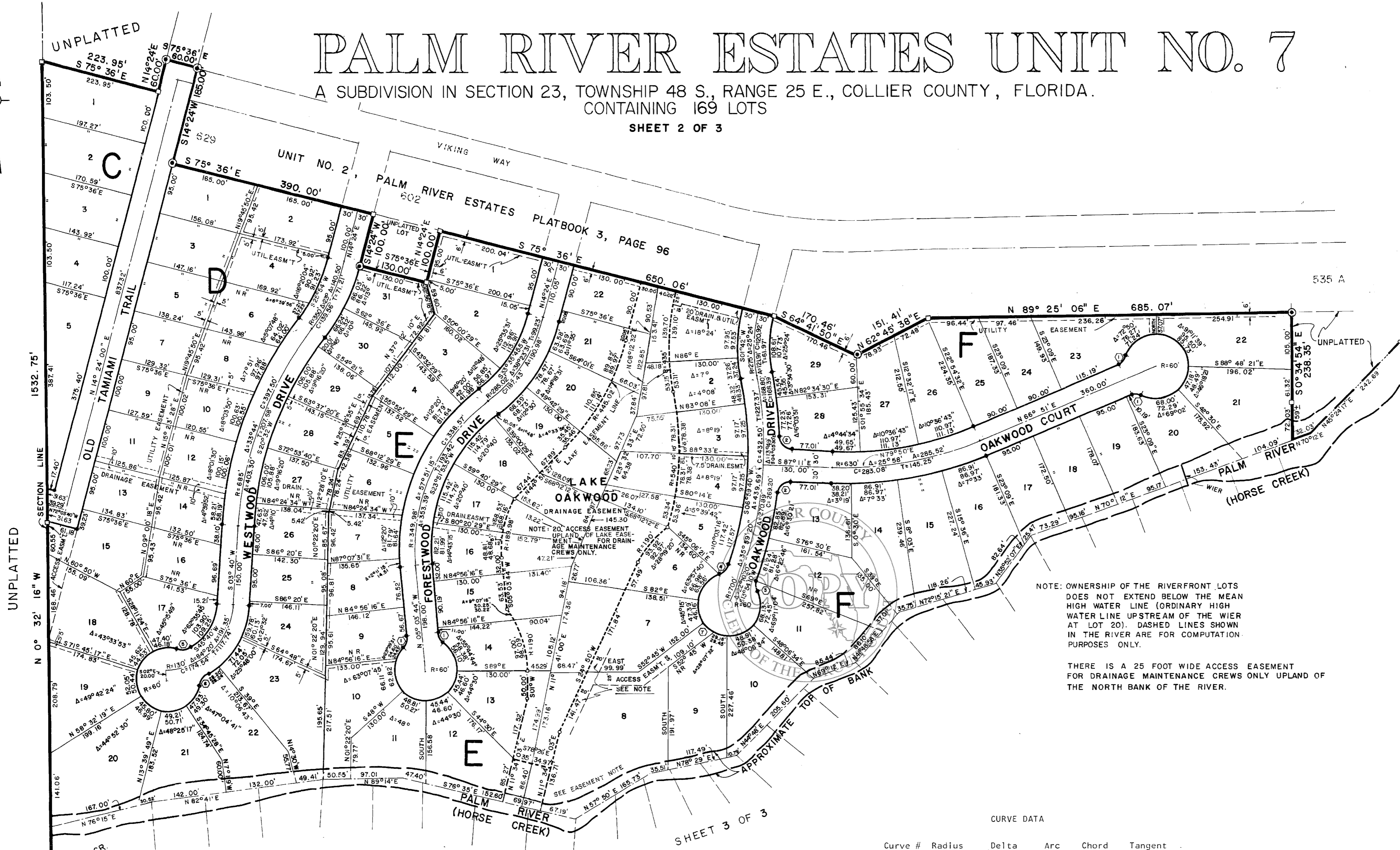
# PALM RIVER ESTATES UNIT NO. 7

A SUBDIVISION IN SECTION 23, TOWNSHIP 48 S., RANGE 25 E., COLLIER COUNTY, FLORIDA.  
CONTAINING 169 LOTS

SHEET 2 OF 3



TRI-COUNTY ENGINEERING, INC.  
CIVIL & STRUCTURAL ENGINEERS  
LAND PLANNERS & SURVEYORS  
NAPLES, FLORIDA  
DWG. NO. C-3068 - 1 (2)  
FEBRUARY 16, 1978



NOTE: OWNERSHIP OF THE RIVERFRONT LOTS DOES NOT EXTEND BELOW THE MEAN HIGH WATER LINE (ORDINARY HIGH WATER LINE UPSTREAM OF THE WIER AT LOT 20). DASHED LINES SHOWN IN THE RIVER ARE FOR COMPUTATION PURPOSES ONLY.

THERE IS A 25 FOOT WIDE ACCESS EASEMENT FOR DRAINAGE MAINTENANCE CREWS ONLY UPLAND OF THE NORTH BANK OF THE RIVER.

CURVE DATA

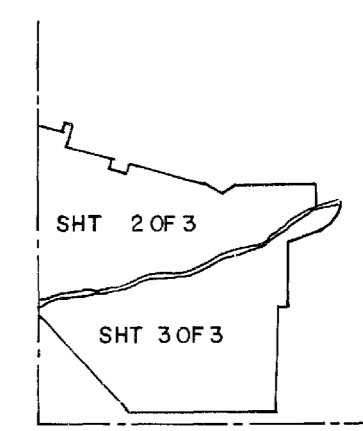
Curve #	Radius	Delta	Arc	Chord	Tangent
1	25.00	49 41 00	21.68	21.01	11.57
2	25.00	85 49 21	37.45	34.04	23.24
3	25.00	47 10 24	20.58	20.01	10.92
4	25.00	52 30 02	22.91	22.12	12.33
5	25.00	40 48 40	17.81	17.43	9.30
6	25.00	52 56 52	23.10	22.29	12.45
7	60.00	24 37 28	25.79	25.59	13.10
8	35.00	112 12 26	68.54	58.10	52.09
9	25.00	72 12 30	31.51	29.46	18.23
10	60.00	41 00 00	42.94	42.03	22.43
11	60.00	21 00 00	21.99	21.87	11.12
12	60.00	24 00 00	25.13	24.95	12.75
13	125.00	77 22 24	168.80	156.26	100.10
14	125.00	43 57 07	95.89	93.55	50.44

**SURVEYOR'S NOTES**

- BASIS OF BEARINGS - ASSUMED
- THERE SHALL BE A 10 FOOT WIDE EASEMENT ALONG THE FRONT OF EACH LOT FOR UNDERGROUND UTILITIES ONLY.
- DENOTES 4"x4" CONCRETE MONUMENT (PRM) FOUND.
- ◆ DENOTES PERMANENT CONTROL POINT (PCP) IRON ROD 5/8"x24" WITH SURV KAP.
- DENOTES 4"x4" CONCRETE MONUMENT WITH SURV KAP, PERMANENT REFERENCE MONUMENT (PRM) SET

10' UTILITY EASEMENT COMMON TO LOTS 5 AND 6 AND TAMMAM TRAIL OR 824pg 230 7-31-79

CERTIFICATION OF P.C.P. - OR 780pg 841



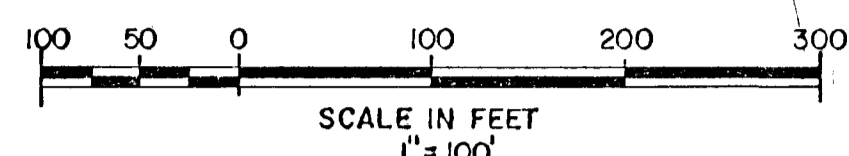
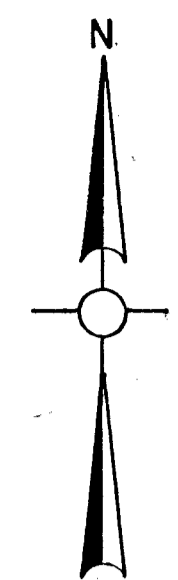
SHEET INDEX

TRI-COUNTY  
RESOLUTION NO. 09-20  
VACATE 20' WIDE ACCESS ESMT OVER LOT 9 BLK B  
RECORDED 1/29/2009 CR 4423 PG 1745-1749  
PLAT BOOK 12 PAGE 29

# PALM RIVER ESTATES UNIT NO. 7

A SUBDIVISION IN SECTION 23, TOWNSHIP 48 S., RANGE 25 E., COLLIER COUNTY, FLORIDA.  
CONTAINING 169 LOTS

SHEET 3 OF 3



TRI-COUNTY ENGINEERING, INC.  
NAPLES, FLORIDA  
FEBRUARY 16, 1978  
TCE DWG NO C-3068-1 (3)

### CURVE DATA

Curve #	Radius	Delta	Arc	Chord	Tangent
1	25.00	49 41 00	21.68	21.01	11.57
2	25.00	85 49 21	37.45	34.04	23.24
3	25.00	47 10 24	20.58	20.01	10.92
4	25.00	52 30 02	22.91	22.12	12.33
5	25.00	40 48 40	17.81	17.43	9.30
6	25.00	52 56 52	23.10	22.29	12.45
7	60.00	24 37 28	25.79	25.59	13.10
8	35.00	112 12 26	68.54	58.10	52.09
9	25.00	72 12 30	31.51	29.46	18.23
10	60.00	41 00 00	42.94	42.03	22.43
11	60.00	45 00 00	47.12	45.92	24.85
13	125.00	77 22 24	168.80	156.26	100.10
14	125.00	43 57 07	95.89	93.55	50.44

### SURVEYOR'S NOTES

BASIS OF BEARINGS - ASSUMED

THERE SHALL BE A 10 FOOT WIDE EASEMENT ALONG THE FRONT OF EACH LOT FOR UNDERGROUND UTILITIES ONLY, (UNLESS OTHERWISE NOTED.)

□ DENOTES 4"x4" CONCRETE MONUMENT (PRM) FOUND.

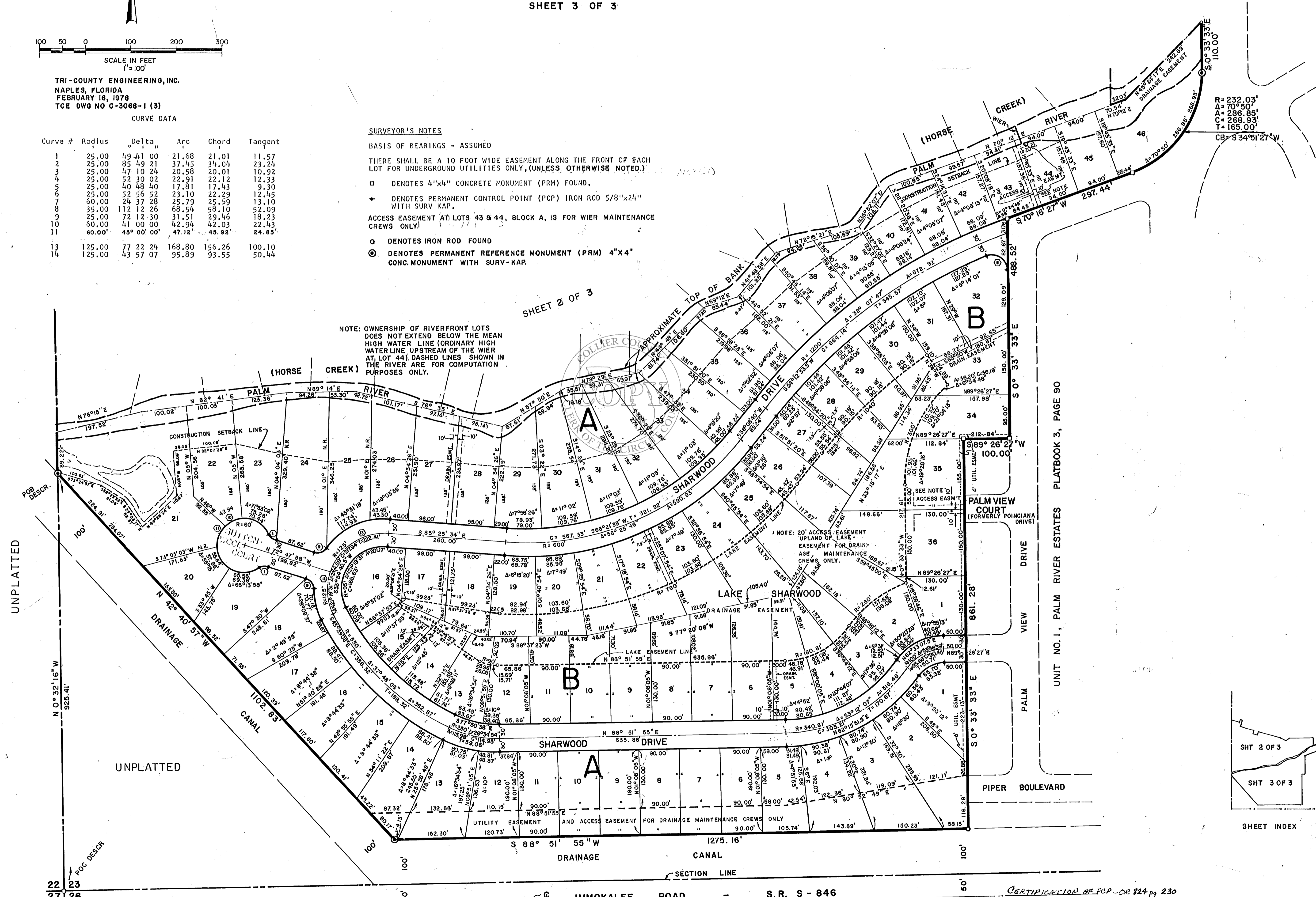
✦ DENOTES PERMANENT CONTROL POINT (PCP) IRON ROD 5/8"x24" WITH SURV KAP.

ACCESS EASEMENT AT LOTS 43 & 44, BLOCK A, IS FOR WIER MAINTENANCE CREWS ONLY!

○ DENOTES IRON ROD FOUND

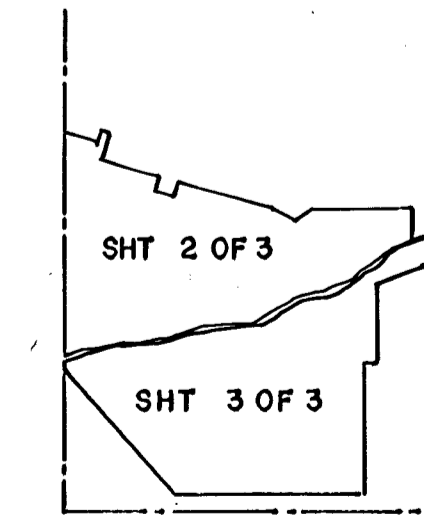
⊙ DENOTES PERMANENT REFERENCE MONUMENT (PRM) 4"x4" CONG. MONUMENT WITH SURV-KAP.

NOTE: OWNERSHIP OF RIVERFRONT LOTS DOES NOT EXTEND BELOW THE MEAN HIGH WATER LINE (ORDINARY HIGH WATER LINE UPSTREAM OF THE WIER AT LOT 44). DASHED LINES SHOWN IN THE RIVER ARE FOR COMPUTATION PURPOSES ONLY.



SHEET 2 OF 3

UNIT NO. 1, PALM RIVER ESTATES PLATBOOK 3, PAGE 90



SHEET INDEX

DRAWING NUMBER  
**PG 29**

DRAWING NUMBER  
**PB 12**

DRAWING NUMBER

DRAWING NUMBER